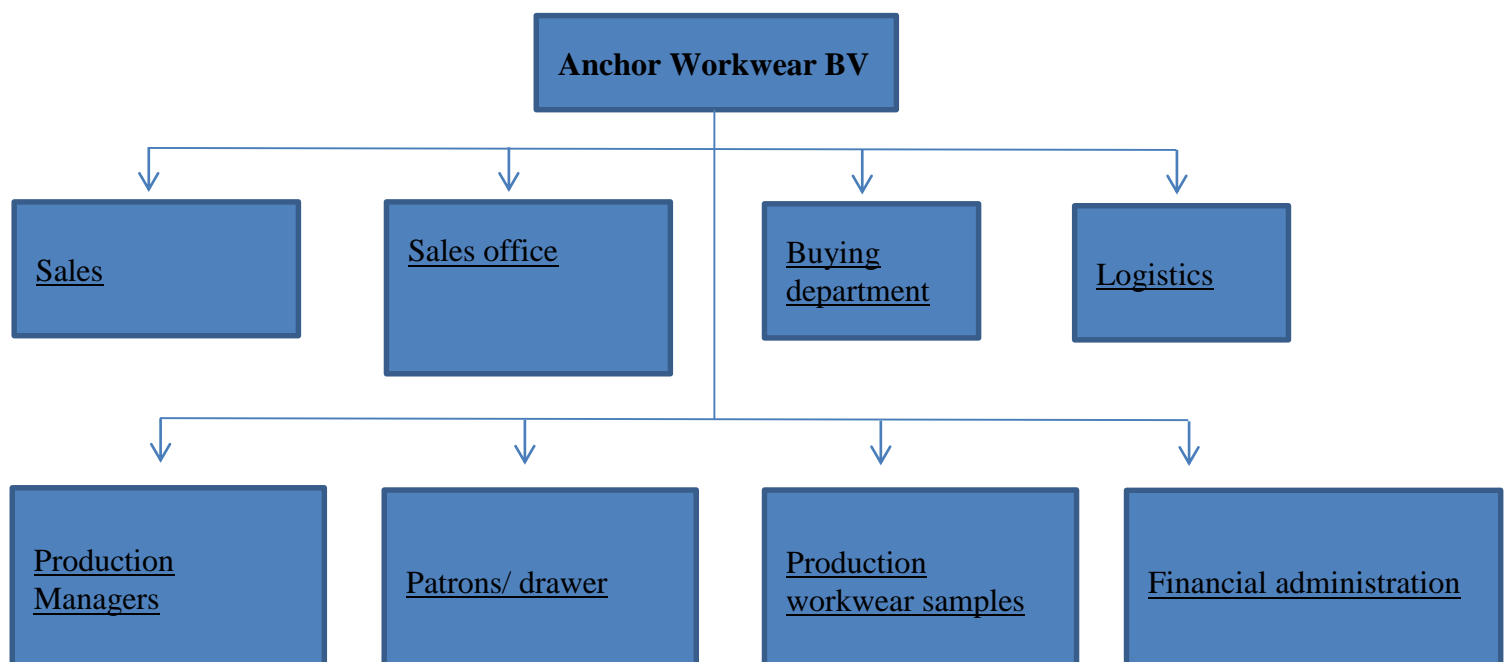


## Anchor Workwear



- Contact person
- Ben Huijbers                      0413 369 880
- ben.huijbers@anchorworkwear.com
- Start date membership
- July 2013

### Organisational chart





- Social Report 2016 Anchor Workwear

## Contents

Summary: goals & achievements 2016.....	3
1. Sourcing strategy.....	3
1.1. Sourcing strategy & pricing .....	3
1.2. Organisation of the sourcing department.....	3
1.3. Production cycle .....	3
1.4. Supplier relations .....	3
1.5. Integration monitoring activities and sourcing decisions.. <b>Fout! Bladwijzer niet gedefinieerd.</b>	3
2. Coherent system for monitoring and remediation .....	4
2.1. Factory A/Country A.....	4
2.2. Factory B/Country B.....	4
2.3. External production .....	4
3. Complaints handling.....	4
4. Training and capacity building.....	4
4.1. Activities to inform staff members .....	4
4.2. Activities to inform agents .....	5
4.3. Activities to inform manufacturers and workers .....	5
5. Information management.....	5
6. Transparency & communication.....	5
7. Stakeholder Engagement.....	5
8. Corporate Social Responsibility.....	5



## **Summary: goals & achievements 2016**

We want good labour conditions to be a normal aspect in the factories, where our garments are produced. In 2016 we have had an audit in one external factory in Vietnam and a WEP by FWF in our own factory in Vietnam. The outcomes of the audits were positive. The issues found are partly solved in 2016 and the remaining issues will be handled in 2017.

## **1. Sourcing strategy**

### ***1.1. Sourcing strategy & pricing***

We try to produce as much as possible in own factories and remaining production in a few selected external factories. We source based on production quality, price, social factors and availability. Decisions about production locations are taken by the management team.

Pricing is based on calculation and evaluation of the first production run.

We have daily contact with the production locations with Skype.

### ***1.2. Organisation of the sourcing department***

The management team is responsible for the strategy and sourcing. Together with the buying department we select new production companies.

### ***1.3. Production cycle***

Anchor Workwear buys all fabrics and most accessories and supplies patterns. These are transported to the production locations. The production companies cut the fabric and produce the garments. The ready-made garments are transported to The Netherlands. Lead time for production Europe is normally 7-9 weeks. Lead time for production Asia is 11-15 weeks.

### ***1.4. Supplier relations***

Anchor Workwear has selected new suppliers in 2015. Out of these suppliers we selected one factory in Vietnam, which makes production for Anchor Workwear on a regular basis. We consider a number of criteria to select a new factory: reliability, quality standard, respect of deadlines, prices and social responsibility. We also visit the new selected factories for visual inspection. We did not source for new factories in 2016.

### ***1.5. Integration monitoring activities and sourcing decisions***

Our main objective stays to produce in our own factories. Issues of improvement do not result in outsourcing, but in solving the issues.



- Social Report 2016 Anchor Workwear

In 2016 there was an audit in the external factory in Vietnam. Part of the issues found during this audit were handled direct and part will be handled in 2017. During visits we found no new issues.

## **2. Coherent system for monitoring and remediation**

### ***2.1. Factory Bulgaria***

In Bulgaria we have had an audit in 2015. The result of the audit was good and showed only minor points for improvement. Most points have immediately been solved and the remaining issues have been handled in 2016.

### ***2.2. Factory Vietnam***

We have had an audit in our factory in Vietnam in 2015. The most important points for the CAP have been solved in 2015. Most of the remaining points have been handled in 2016.

We had an audit in another production location in Vietnam. The urgent matters have been handled directly and the remaining points will be handled in 2017.

### ***2.3. External production***

Anchor Workwear imported shoes from Ecco. Ecco has its own, expanded version of a Code of Conduct. Above, Ecco has signed the Code of Labour Practices of FWF.

## **3. Complaints handling**

We have posted the code of labour practices in our factories. Workers can put their complaint to the management of the factory.

We received several requests from the workers. These were handled by the management of the factory. In 2016 we have not received any complaints.

During the audit in Bulgaria workers were asked for a system for complaints. People answered, that if they have questions or complaints, that they can address them to the management of the factory and the management is capable to solve the issues. They don't need another system for complaints.

It doesn't feel good for factories to encourage workers to complaint.

## **4. Training and capacity building**

### ***4.1. Activities to inform staff members***

During meetings we inform the staff about the FWF membership and audits of production locations. We inform our membership on our website and during fairs and



- Social Report 2016 Anchor Workwear

visits to our customers. The staff of Anchor Workwear were informed in November 2016 during a training by Fair Wear Foundation.

#### ***4.2. Activities to inform agents***

Not applicable

#### ***4.3. Activities to inform manufacturers and workers***

In 2016 we organised a Workplace Educational Programme in our own factory in Vietnam. A selected group of workers and the management of the factory attended this WEP. During visits to factories we have informed manufacturers of our membership and the importance of social responsibility.

### **5. Information management**

- Anchor Workwear is now setting up a system for keeping track of progress on the implementation of the Code of Labour practices.
- In 2016 the management of Anchor Workwear visited all production locations several times during production.

### **6. Transparency & communication**

The general public and customers have been informed through various channels;

- We have put the Fair Wear logo in our emails
- We mention our Fair Wear membership on our website
- We mention our Fair Wear membership in our offers to clients.
- Anchor Workwear will write an annual social report

### **7. Stakeholder Engagement**

We did not make use of any FWF stakeholder resource, because there has been no issues to be discussed

### **8. Corporate Social Responsibility**

- Anchor Workwear has an internal CSR policy regarding reducing energy consumption, reducing waste and regarding discrimination. Apart from that, CSR is a natural issue during daily processes.
- Anchor Workwear also considers the external CSR issues. We produce safe garments (with Okotex) under good circumstances. We support an orphanage with clothes. We use organic and recycled materials for fabrics to deliver a contribution to the environment.